

Jersey Skills Show PwC Quiz

What do you know about PwC? Check out our website and put your knowledge to the test below. Send your completed quiz over to us to have your chance at winning our prize draw!

Question 1. How many offices do we have in the Channel Islands?

Question 2. How many employees are across our Channel Island offices?

Question 3. We provide 3 lines of service, what are they?

Question 4. What is our overall Purpose?

Question 5. On our trainee schemes, what professional qualifications can you study towards while gaining invaluable working experience and support with PwC CI?

Question 6. What are 2 of the 5 PwC Professional attributes?

Question 7. Which of our services interests you the most and why?

Question 8. What types of clients do we work with?

Question 9. According to PwC analysis, what percentage of jobs in Guernsey and Jersey are predicted to be automated by 2035?

Question 10. What were 2 of the 5 key measures used when ranking the PwC Woman in Work index?

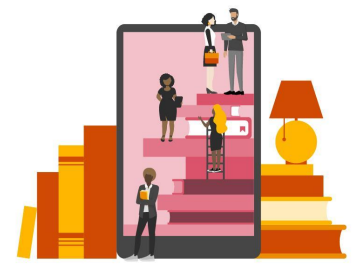
Question 11. During the last 12 months, what further measures have PwC CI adopted to fix the gender pay gap and provide an inclusive workplace?

Questions 12. PwC globally has made a worldwide science-based commitment to reach net zero greenhouse gas emissions by 2030. What are some of the actions we plan to take to achieve this?



This content is for general information purposes only and should not be used as a substitute for consultation with professional advisors.

© 2022 PricewaterhouseCoopers CI LLP. All rights reserved. In this document, "PwC" refers to PricewaterhouseCoopers CI LLP (a limited liability partnership in the United Kingdom) which is a member firm of PricewaterhouseCoopers International Limited, each member firm of which is a separate legal entity.



PwC Website

[pwc.com/jg/en.html](https://www.pwc.com/jg/en.html)

www.pwc.com/jg/en/careers

What have you learnt about PwC...

Please send in your answers to bci_recruitment@pwc.com

